



# Dragon Speak

## Dragon Speak

### Dragon Speak

the newsletter of the Welsh Society of Portland

Our **APRIL meeting** was a great time! We voted and accepted the revision to the Bylaws. Copies will be sent to each member, either by email or US Postal Service. Our program was a 'Grand tour of Wales and England,' with power-point style presentation of photos, all narrated by *Dame Maggie Rogers & Sir Dick Pugh*. Dick attended at meteoricists convention in Greenwich, and also hunted information about early Pughs in Wales. Maggie was ever on the lookout for mushrooms; she tried to find them among the pavements in Greenwich, but was not successful. We enjoyed the beautiful shots of Wales countryside.

We had a DEE-liscious meal - contributions by many - and a good time together.

#### MAY MEETING

In May, our program will be a showing of the film, 'Patagonia.'

This is a 2010 drama about different Welsh and Argentine people connected to the Welsh settlement in Patagonia, Argentina: a Cardiff couple hoping to reinvigorate their relationship travel to Argentina; an elderly Welsh-Argentine woman plans to travel to Wales to find her mother's family farm. Two internationally known stars appear - Matthew Rhys and Nia Roberts. Directed by Welsh director Marc Evans, it was selected as the British entry for Best Foreign Language Film at the 84th Academy Awards, but did not make the final shortlist.



#### Annual Meeting June 2

The Annual Meeting of the Welsh Society of Portland will be held on June 2, the date of our regular monthly meeting. The Annual Meeting is an important tradition to restore, giving us a summation of where we've been and where we're going. Our President will give a report, and we will have elections of some officer positions and 1 trustee.

A listing of members being presented for office will go to all members prior to the meeting.

## The Celtic Lunar Zodiac - your moon sign

		Greco-Roman zodiac	planet
<b>HAWTHORNE</b> tree	<b>13</b> May - <b>9</b> June	<b>Taurus-</b> <b>Gemini</b>	<b>Vulcan</b>  <small>Astronomical Symbol for Vulcan - 2004 UFAU The First International Union of Pure and Applied Astrology</small>

Gem: Topaz Flower: Wood sorrel Symbol: the chalice

In Welsh mythology, the hawthorn appears as the malevolent giant Ysbaddaden Benkawr, protected his daughter Olwen against suitors, and he lived in a castle guarded by 9 gatemen and 9 watchdogs, revealing the taboo against marriage in the month of the hawthorn.

Hawthorne tree characters are most charismatic, full of innovations and new ideas. They are akin to the Celtic bards and Druids of old, often excelling in the performing arts and naturally drawn to the spheres of influence. They are naturally curious, and have an interest in a broad range of topics. Excellent listeners who people seek out as an outlet to release their burdens. Tend to see the big picture, and have amazing insight. This gift for influencing others is wisely tempered with the virtue of sympathy, a very positive response and personal quality. Sense of humor can be sharp and full of innuendo, the type often missed by less quick-witted people. Volatile temperament, likely to explode every so often - bursts of anger directed verbally with the cutting edge of steel.

May find it difficult to hold still long enough to forge a permanent relationship. The vivacious quality that attracts people make them glamorous friends, but at times perhaps impossible partners. Affectionate but strict parents, perhaps knowing only too well the tricks and maneuvers which are possible.

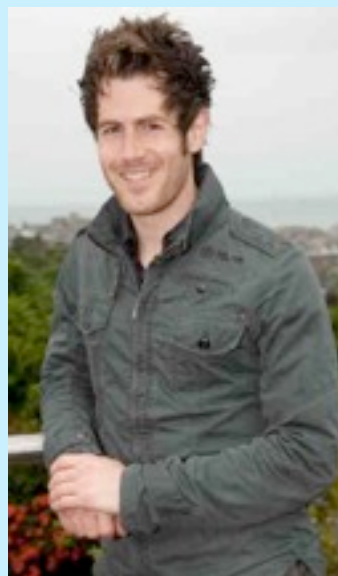
The Mercurial-Vulcan quality has all the alchemy and ingredients of life in a flux, ever-changing, never still. When they do relax, perhaps the whole world is momentarily on hold.



Helena Patterson, *The Celtic Lunar Zodiac*, 1992, Rutland, VT, Charles E. Tuttle Co.

The new Welsh-language *Children's Poet Laureate for 2011-2013* is **Eurig Salisbury**. The Cardiff-born Salisbury is a research fellow at Aberystwyth University.

The Childrens' Poet Laureate is a joint scheme between The Welsh Books Council, The Welsh Language Board, and Urdd Gobaith Cymru (one of Europe's largest youth organizations).



"It's a great honour to be asked to work with Wales' small poets," he said. "I was a small poet once, even though I didn't realise it at the time, and I used to really enjoy reading silly poems."

"To be honest, the poems I most remember are those of my predecessor, Dewi Pws Morris' poems are full of fun, and my aim is to make sure that Wales' children have the same amount of fun with me over the next two years."

thanks to Maggie Rogers, whose family name was *Salisbury*

## Have you heard about the 'Welsh Not'?

In 19th century Wales, school children were punished for speaking their own language in the belief that the English language would solve their educational problems.

A report of 1847 written by English barristers who did not speak any Welsh between them castigated Welsh culture in particular. The 'Welsh Not' was a small piece of wood or slate inscribed with the letters 'WN' and was hung around the neck of any child caught speaking Welsh. At the end of the day, the child wearing the 'Welsh Not' would be punished by the schoolteacher



Cymraeg am Byth!

<http://teifidancer-teifidancer.blogspot.com/2010/10/welsh-not.html>

retrieved 2/16/12

thanks to Casey Jones for this idea



### **WSOP member Judith Ford is cast member of Portland State play, 'Fen'**

Judith Ford (raised in South Wales) and a WSOP member, is a cast member of the PSU Theater Arts presentation of Caryl Churchill's play 'Fen.'

The play is set in East Anglia, in the 1980's. A fen is a wetland with high mineral levels, supporting a wide range of animals & plants. In this story, the fen was drained to provide valuable growing land. While the title sounds very British - little village, 'close the garden-gate', etc., there are serious issues - child abuse, separation, and emphasis on the plight of the farming economy and life in the country, and there is a love story.

Playwright Caryl Churchill's plays have been successful in the US. She got to know the people and way of life - since some characters and events in Fen were based on real people and situations, the play is successfully realistic. There are 6 actors who portray 22 characters!

FEN plays at Lincoln Hall on the PSU campus - May 25-June 2 all performances at 7:30, except for a 2pm matinee on 5/29. Tickets at the Lincoln Hall box office.



"WHERE ARE YOU GOING, MY PRETTY MAID?"



"Where are you going,  
my pretty maid?"  
"To Llyncochdywarchen,  
sir," she said.  
"Shall I go with you,  
my pretty maid?"  
"If you climb Tecwynuch-  
elochrau sir," she said.  
"Is it as rough as its name,  
my pretty maid?"  
"Rough as Bwlchardudwy,  
sir," she said.  
"I like not your Welsh,  
my pretty maid?"  
"Glyndwr Fawrglod did,  
sir," she said.  
"I'll never learn Welsh,  
my pretty maid?"  
"Nobody asked you,  
sir," she said.

a  
vintage  
postcard



## CHWARDDIADAU (Laughs)

Ifor feared his wife Gwladys wasn't hearing as well as she used to and he thought she might need a hearing aid. Not quite sure how to approach her, he called the family Doctor to discuss the problem. The Doctor told him there is a simple informal test the husband could perform to give the Doctor a better idea about her hearing loss.

'Here's what you do,' said the Doctor, 'stand about 40 feet away from her, and in a normal conversational speaking volume see if she hears you. If not, go to 30 feet, then 20 feet, and so on until you get a response.'

That evening, the wife is in the kitchen cooking dinner, and he was in the den. He says to himself, 'I'm about 40 feet away, let's see what happens.' Then in a normal volume, he asks, 'Honey, what's for dinner?'

No response...

So the husband moves closer to the kitchen, about 30 feet from his wife and repeats, 'Gwladys, what's for dinner?'

Still no response...

Next, he moves into the dining room where he is about 20 feet from his wife and asks, 'Honey, what's for dinner?'

Again, he gets no response...

So, he walks up to the kitchen door, about 10 feet away. 'Honey, what's for dinner?'

Again, there is no response.

So, he walks right up behind her. 'Gwladys, what's for dinner?'

'Er mwyn Duw (for God's sake), Ifor, for the FIFTH bloody time, CHICKEN!'

thanks to Betty Pierce 10/27/11

### Do you know "cwttch" (pronounced kootch) ?

Give me a cwttch.	Give me a cuddle.
It's in the cwttch	It's in the cupboard below the stairs.
Go and cwttch!	Lie down! (normally addressed only to dogs)
Cwttch it away!	Hide it!
Coal cwttch	Coal shed

*Happy Birthday to WSOP'ers born in MAY !!*

Penblwydd Hapus i chi! May your day be full of good friends and family, and good cheer!



May 2 Megs Lloyd-Patton

May 20 Casey Jones

if we missed you, we may not have your birthday on the list. Please call or email

John Evans (see below)

**A Welsh saying -  
good also for Portland!**

*Am y tywydd, gorau tewi*  
It's best to be silent about the weather

## Calendar

**May 5 Film 'Patagonia'**

**June 2 Officer and Trustee election**  
**Social time, hymn sing**

**July 7 Picnic & Longbow presentation**

**August 4 Life of Richard Burton film 'Becket'**  
**Casey Jones**

12:30pm Business Meeting for all

1:00pm Refreshments

1:30pm Program

**Unless noted, all meetings of WSOP are held at St. David of Wales Church 2800 SE Harrison Street Portland, OR 97214**

President	Megs Lloyd-Patton	503-284-9805	<a href="mailto:Mellp99@comcast.net">Mellp99@comcast.net</a>
Vice-President	vacant		
Treasurer	KarenAlice Jones	503-636-1118	<a href="mailto:Kaj97034@comcast.net">Kaj97034@comcast.net</a>
Secretary and DRAGON SPEAK Editor	John Evans	503-777-4518	<a href="mailto:Squam-lake@comcast.net">Squam-lake@comcast.net</a>
Trustee	Janet Figini	503-630-5317	<a href="mailto:jpfigini@cascadeaccess.com">jpfigini@cascadeaccess.com</a>
Trustee	Betty Pierce	503-657-6988	<a href="mailto:betbpierce2@yahoo.com">betbpierce2@yahoo.com</a>
Trustee	Claudia Zahorcak	503-692-9108	<a href="mailto:claudia.zahorcak@comcast.net">claudia.zahorcak@comcast.net</a>